

ELECTRONIC DEADBOLTING LOCK

The YD25 incorporates advanced design, quality and electronic ingenuity to provide a secure, yet versatile, door locking device. With integrated access control features and robust engineering, the YD25 is a high security streamlined lock suitable for use on any single or double acting door.

Streamline Dimensions

- 210mmL x 25mmW x 42mmD.

High Security

- Automatic deadbolting.
- 10,000N holding force (1,000kg).
- 12.7mm diameter stainless steel bolt pin.

Integrated Access Control

- Anti-tailgate and Anti-tamper.
- Auto-relock after 0/3/6/9 seconds.
- Multiple attempts to lock and unlock.

Dual Monitoring

- Door and bolt position monitors.

Low Current Consumption

- Current reduction circuitry limits the power required to maintain the locks state.

Electronic Convenience

- Input voltage from 12VDC – 24 VDC.
- Thermal overheating protection.
- Reverse polarity and transient protection.

Versatile Installation

- Mortise mount horizontally or vertically, on single or double acting doors.
- Surface mount with the aid of the YD25 accessories, including mounting onto glass.

Approvals

- CE-BS EN50081-1, BS EN50082-1, BS EN50082-2.
- Cycle tested to 1000000 operations.



ACCESSORIES & SPECIFICATIONS

Surface mounting a lock and/or strike with the aid of a YD25 housing offers more flexibility in installation and makes securing glass doors possible. Dress plates are offered to give a 'clean' finish when a housing has been installed onto glass. Both the housing and dress plate are supplied with self-adhesive tape for instant application to glass doors and frames.

YD25 SPECIFICATIONS

Fail Safe Lock (YNL101A)

210L x 25W x 42D(mm)

Fail Secure Lock (YNL102A)

210L x 25W x 42D(mm)

Short Strike (YNL103A)

80L x 25W x 3D(mm)

Long Strike (YNL103E)

210L x 25W x 3D(mm)

Housing (YNL104J)

225L x 29W x 46.5D(mm)

Dress Plate (YNL106J)

225L x 0.7W x 50D(mm)

Holding Force

10,000N (1000Kg)

Voltage at Lock

12 – 24VDC +/-10%

Current Usage

Holding: 160mA@12V, 95mA@24V

Operating: 1.25A@12V, 1A@24V

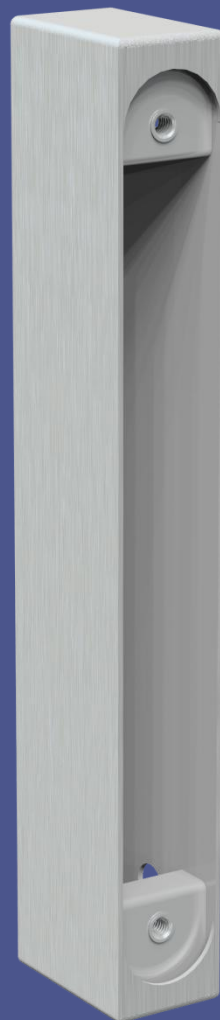
Monitors Switches

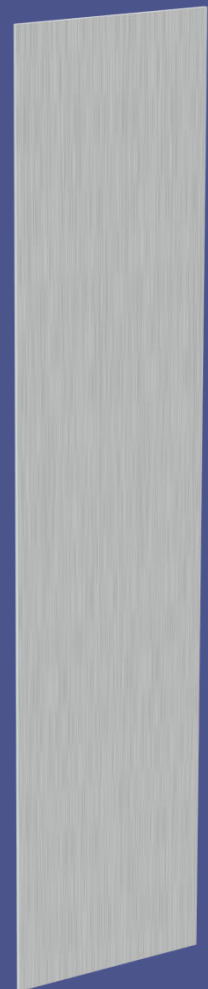
Bolt position: 25VDC, 0.5A

Door Position: 100VDC, 0.5A

Materials

Plastics: POM, Stainless Steel: 304


 HOUSING
(YNL104J)

 LONG STRIKE
(YNL103E)

 DRESS PLATE
(YNL106J)

LOCKING DIVISION:

 BQT Solutions (SEA) Pte Ltd
Mediapolis
71 Ayer Rajah Crescent #03-03
Singapore 139951
Phone: +65 62207970

 BQT Solutions (NZ) Ltd
Unit E, 8 Piermark Drive
Albany, Auckland 0632
New Zealand
Phone: +64 94473145

ENQUIRIES:

 Australia & Pacific: E: sales@bqtsolutions.com P: +61 2 8817 2800
New Zealand: E: salesnz@bqtsolutions.com P: +64 9447 3145
EMEA Region: E: salesuk@bqtsolutions.com P: +44 17 3773 5071
Americas: E: salesamerica@bqtsolutions.com P: +1 443 286 1020
Greater Asia: E: salesasia@bqtsolutions.com P: +65 6220 7970

DEALER DETAILS: