

ELECTRONIC ROLLER DOOR LOCK

Strong, secure and convenient are vital qualities of any lock. To date, roller door locks have failed to achieve the right balance of these features so compromises had to be made, but no longer. The YR10 combines the features found in traditional electronic locks, with the physical strength and function required to secure roller door of any shape, whatever size.

Extreme Security

- Automatic deadbolting, 18mm diameter stainless steel bolt pin.
- 30,000N holding force (3,000Kg).
- Keyed access to manual override.

Varied Voltage Input

- Input voltage from 12VDC – 24VDC.

Complete Monitoring

- Door position switch.
- Bolt locked monitor.
- Bolt unlocked monitor.

Low Current Consumption

- Less than 15mA in standby.
- Less than 300mA in operation.

Integrated Access Control

- Selectable timed re-lock after 1 minute.
- Multiple attempts to lock and unlock.
- User selectable fail safe / fail secure operation.
- Anti-tamper and selectable instant auto-relock when desired.

Versatile Installation

- Internal horizontal or vertical installation.

Security System Compatible

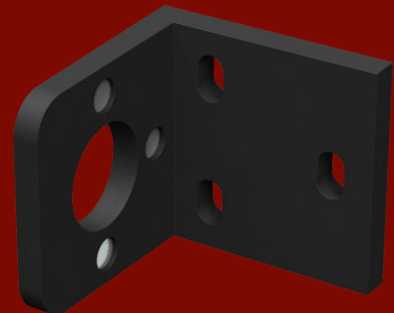
- Integrate with access control and alarm systems.

Dimensions

- 157mmL x 89mmW x 77mmD.

Approvals

- Cycle tested to 1000000 operations.



PRODUCT SPECIFICATIONS

With a holding force of over 30,000N the YR10 offers the ultimate security for large doors and shutters. The mounting bolts for the lock are concealed under the lock's cover which can only be removed by using the supplied key. With its symmetrical design the YR10 can be mounted horizontally or vertically on the left or right hand side of a door.

YR10 SPECIFICATIONS

Lock – Field convertible (YNL700A)

152L x 88W x 78D(mm)

L Strike (YNL703)

75L x 75W x 70D(mm)

Holding Force

30,000N (3000Kg)

Bolt Pin

Stainless Steel, ϕ 18mm, 35mm stroke

Feedback

Audible beeper for locked / unlocked and failed alarm

Voltage at Lock

12 – 24VDC +/-10%

Current Usage

Holding: <15mA@12V, <15mA@24V

Operating: <300mA@12V, <200mA@24V

Stall: <2A@12V, <1A@24V

Monitors Switches

Bolt position: 60VDC, 0.2A

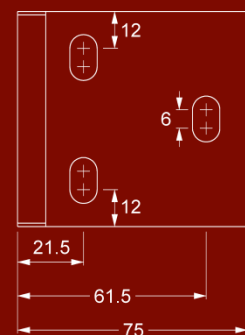
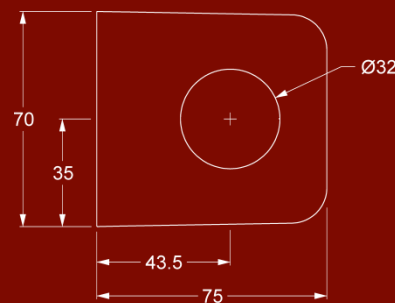
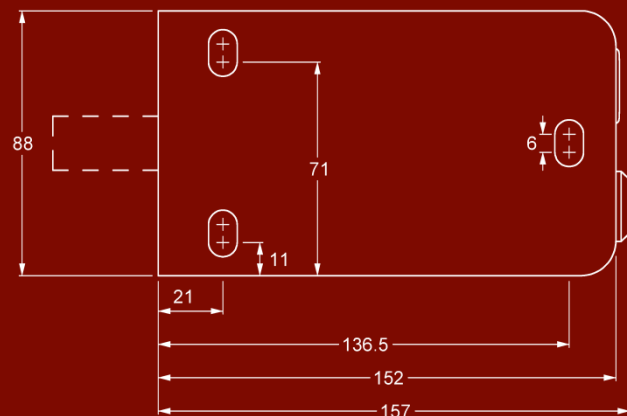
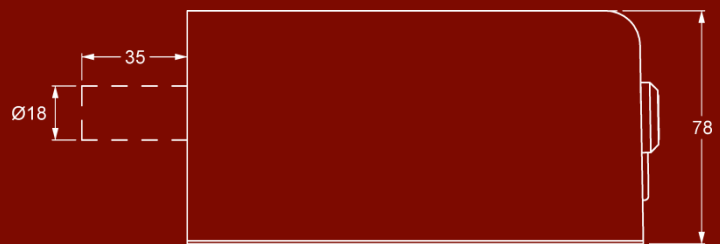
Door Position: 100VDC, 0.5A

Materials

Aluminium: A380, Stainless Steel: 304

Endurance

Cycle tested to 1000000 operations.



LOCKING DIVISION:

BQT Solutions (SEA) Pte Ltd
Mediapolis
71 Ayer Rajah Crescent #03-03
Singapore 139951
Phone: +65 62207970

BQT Solutions (NZ) Ltd
Unit E, 8 Piermark Drive
Albany, Auckland 0632
New Zealand
Phone: +64 94473145

ENQUIRIES:

Australia & Pacific: E: sales@bqtsolutions.com P: +61 2 8817 2800
New Zealand: E: salesnz@bqtsolutions.com P: +64 9447 3145
EMEA Region: E: salesuk@bqtsolutions.com P: +44 17 3773 5071
Americas: E: salesamerica@bqtsolutions.com P: +1 443 286 1020
Greater Asia: E: salesasia@bqtsolutions.com P: +65 6220 7970

DEALER DETAILS: