

YC20

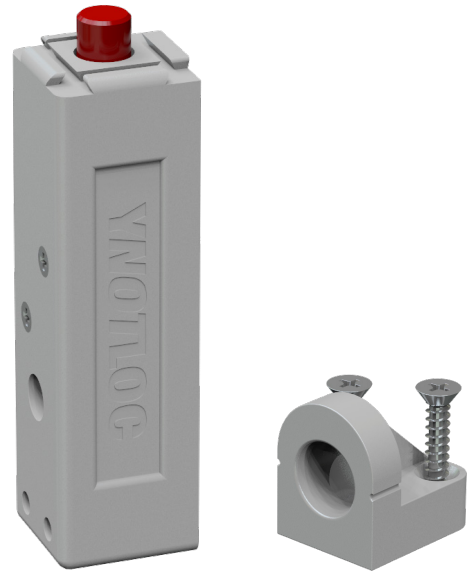
Safety Lock



In moving vehicles, securing cabinet doors and drawers from opening unexpectedly is essential.

The YC20 achieves this while allowing the user one button access to all the cabinets by utilising an electromechanical system powered from the vehicles battery.

The next generation of vehicle cabinet locking is here.



FEATURES

Zero Power Consumption

Because of the power-to-toggle control, power is only used to change the state of the lock, and no power is used to maintain either state. This means the YC20 is perfect for installations where power limitations exist, including vehicle cabinetry installations and areas where mains power is not available and a battery must be used.

Simple Installation

A patented installation aid ensures fitting the lock is a quick and easy process. Locks can be daisy-chained together to help simplify installation even further.

Concealed Security

All the lock components are hidden inside the cabinetry ensuring a clean look as well as offering a further level of security.

Modular System

The YC20 locks are sold in four lock packs and come with matching strikes, mounting screws, and packers. Systems can be expanded by simply adding more packs to suit any requirements.

Open Integration

With simple screw terminals, locks can be integrated into systems of any size. The power-to-toggle style control means that applying a pulse of $\pm 12\text{VDC}$ will lock or unlock the YC20. The Rocker Switch accessory can offer this control directly, while integration with countless alternative control methods can be used to suit any requirement.

SPECIFICATIONS

Door Gap

2mm maximum (installation aid included)

Static Strength

500 newtons (50Kg)

Endurance

Cycle tested to 1,000,000 operations

Bolt Pin

ø8.3mm, 6mm extension

Voltage at Lock

12VDC $\pm 10\%$

Current Usage

Holding: 0mA

Operating: 350mA

Materials

Lock / Strike Body: ABS Plastic

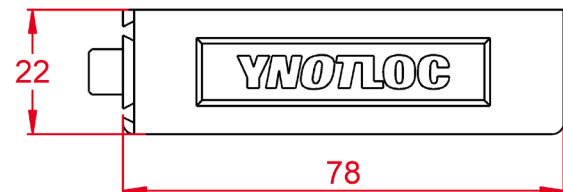
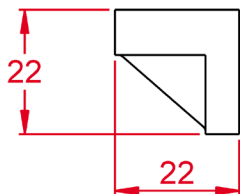
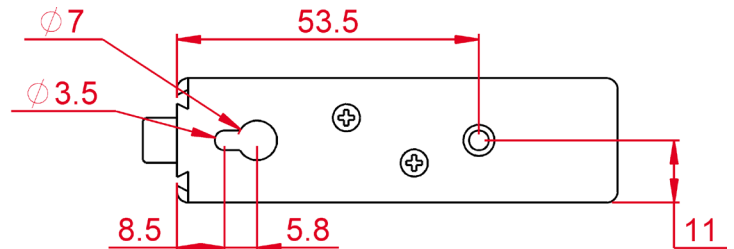
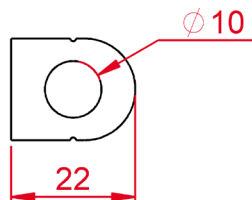
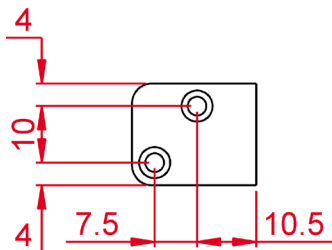
Bolt Pin: Plastic-Capped Steel

Lock Variants

YNL510B – 4 Lock Pack

Accessories

YNL513 – Rocker Switch



Drawings are not to scale. Dimensions are in millimetres (mm).