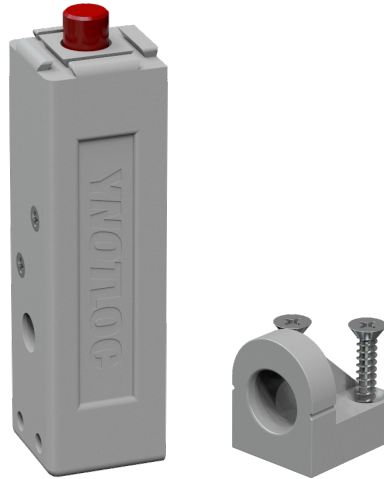


SAFETY LOCK DATASHEET

23.06.21

PRODUCT

Effectively and discreetly secure cabinet doors and drawers in vehicles to ensure no unwanted openings during transit, with individual or master control of each lock for maximum convenience.



FEATURES

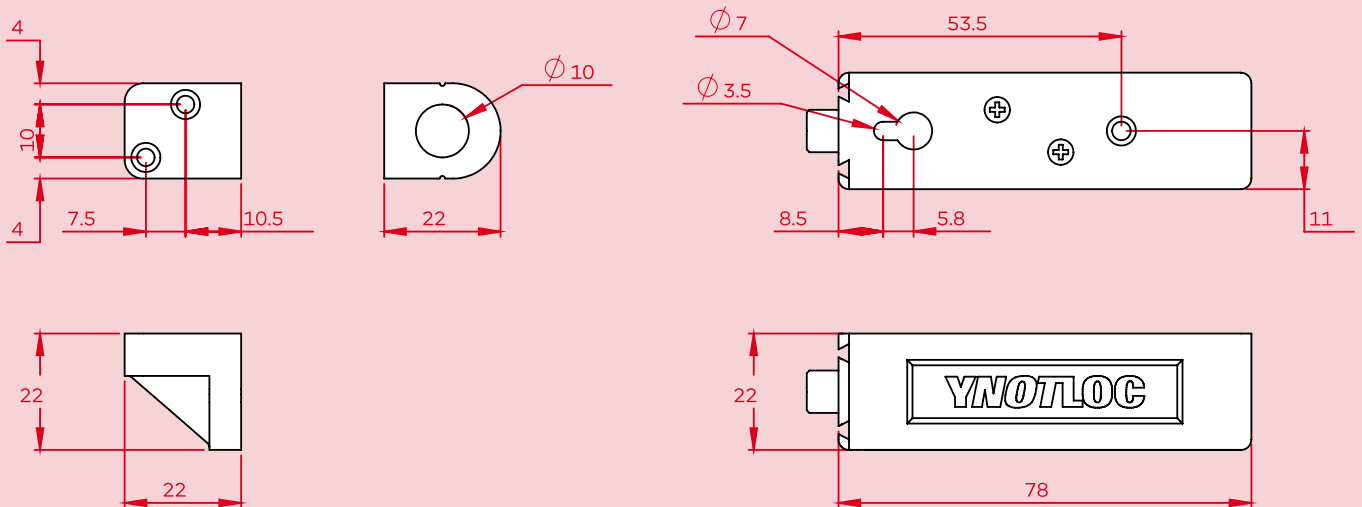
- **Zero Power Consumption**
Because of the power-to-toggle control, power is only used to change the state of the lock, and no power is used to maintain either state. This means the YC20 is perfect for installations where power limitations exist, including vehicle cabinetry installations and areas where mains power is not available and a battery must be used.
- **Simple Installation**
A patented installation aid ensures fitting the lock is a quick and easy process. Locks can be daisy-chained together to help simplify installation even further.
- **Concealed Security**
All the lock components are hidden inside the cabinetry ensuring a clean look as well as offering a further level of security.
- **Modular System**
The YC20 locks are sold in four lock packs and come with matching strikes, mounting screws, and packers. Systems can be expanded by simply adding more packs to suit any requirements.
- **Open Integration**
With simple screw terminals, locks can be integrated into systems of any size. The power-to-toggle style control means that applying a pulse of $\pm 12\text{VDC}$ will lock or unlock the YC20. The Rocker Switch accessory can offer this control directly, while integration with countless alternative control methods can be used to suit any requirement.

SPECIFICATIONS

- **Door Gap**
2mm maximum (installation aid included)
- **Static Strength**
500 newtons (50Kg)
- **Endurance**
Cycle tested to 1,000,000 operations
- **Bolt Pin**
ø8.3mm, 6mm extension
- **Voltage at Lock**
12VDC $\pm 10\%$
- **Current Usage**
Locked: 0mA
Unlocked: 350mA
- **Materials**
Lock / Strike Body: ABS Plastic
Bolt Pin: Plastic-Capped Steel
- **Lock Variants**
YNL510B – 4 Lock Pack
- **Accessories**
YNL513 – Rocker Switch

DIAGRAM

DIAGRAMS ARE NOT TO SCALE. MEASUREMENTS ARE IN MILLIMETERS (MM).



CONTACT SALES@BQTSOLUTIONS.COM TO BE PUT IN TOUCH WITH YOUR LOCAL REPRESENTATIVE.

WWW.BQTSOLUTIONS.COM