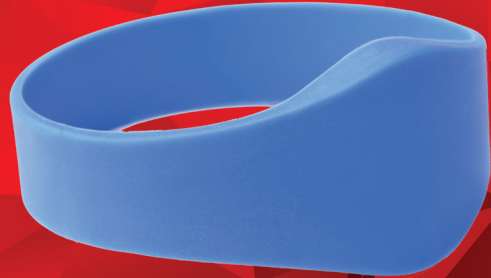


# CREDENTIALS WRISTANDS



## Product Overview

Access control systems commonly require physical credentials to authenticate and approve access. BQT Solutions offer a range of secure credential options that can be preconfigured or customized to suit your needs.

Wristband credentials offer convenient access to facilities, attractions, and services for temporary or long-term use. BQT stocks a wide range of fobs to suit the most common communication technologies – 125KHz, 13.56MHz MIFARE Classic or MIFARE DESFire EV1, EV2, and what we don't have in stock, we can order in for you.

## Why BQT Solutions

BQT Solutions is a specialist in the development, manufacture and supply of high quality, high security card and biometric readers, electromechanical locks and related electronic security products. Providing high security solutions to verticals such as Airports, Hospitals, Prisons and Government for over 35 years.

*Innovating today for a more secure tomorrow*

## Product Benefits

### Benefit One

Designed for comfort and available in different sizes, a Wristband Credential is adjustable and built to withstand the rigors of active venues. Plastic credentials can sustain repetitive impact, heat, moisture, and harsh chemicals while demonstrating high resistance to cracking or breakage. We can also work with you to create paper wristband credentials, ideal for temporary or visitor access.

### Benefit Two

Secure encryption, working with 13.56MHz, MIFARE Classic or MIFARE DESFire credential data, fob credentials can also be programmed to work with a custom access key. If your security systems are currently using 125kHz cards (commonly Prox cards), now is a good time to consider upgrading your systems as this technology can be easily cloned, creating an insecurity in your access control systems.

---

## PRODUCT FEATURES

### MIFARE Classic

---

MIFARE Classic was the first version of a high frequency, more secure MIFARE card system. Storing the card number on one of its sectors, the card then encrypts the communication between the card and reader, and is exponentially harder to hack compared to its predecessors.

### MIFARE DESFire

---

MIFARE DESFire added to this step change in security and is the most secure of the MIFARE card systems. It features a cryptographic module on the card that adds an additional layer of triple DES and AES encryption to the card/reader transaction which reduces the risk of cloning or copying of cards. This is one of the highest standards of card security currently available.

### Custom encryption keys

---

BQT Solutions also offers the ability for an integrator or end user to purchase their own reserved set of encryption keys. This effectively gives the organization their own entire set of globally unique site codes and card numbers, protected with their unique encryption key, for that site. This means there is no chance of other cards from ever working on that site.

---

## PRODUCT APPLICATIONS

Most commonly used as a temporary access credential across all market sectors.

