

YG80 CASE STUDY

# Zoo Enclosure

## BACKGROUND

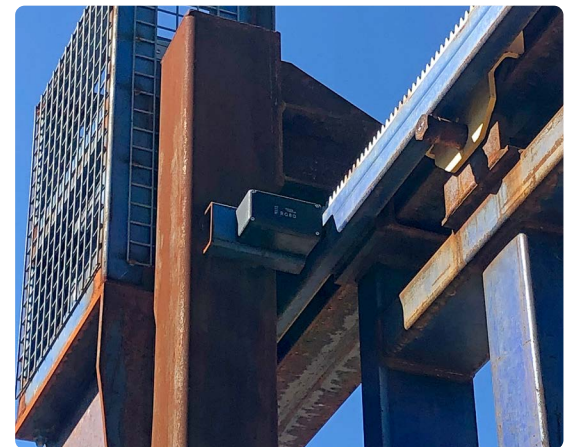
Australia's national Zoo required an overhaul of their locking solutions for their larger animal enclosures. The Elephant enclosure faced specific challenges with regards to the sheer strength, reliability and robustness of the lock as well as ensuring access control parameters were in place to ensure the safety and security of the animals, keepers and visitors.

## CHALLENGE

The lock needed to maintain its integrity while withstanding the harsh Australian heat as well as the dust and debris of the enclosure. Equally, the challenging design of enclosure gates meant the lock needed to offer flexibility in different mounting options, while still maintaining strength and security.

## SOLUTION

To meet the security needs of the Elephant enclosure, the YG80 lock was chosen for its robust performance in unpredictable environments. Designed to withstand extreme weather, the YG80, with its IP67 rating, ensures reliable security in 40°C summer heat. Its versatile installation options and customizable access control enhance security, reduce unauthorized access, and improve safety for Elephants, staff, and visitors. The solution offers peace of mind while maintaining high protection standards in the challenging elephant enclosure environment.



The YG80 can be used in the harshest of environments due to its IP67 rating and built in heater.



[sales@bqtsolutions.com](mailto:sales@bqtsolutions.com)  
[bqtsolutions.com](http://bqtsolutions.com)